

PRELUDE

$\text{♩} = 60$ ($\text{♩} = \text{♩}$)

PIANO

1st loco
and 8ve ↑

rpt 8ve ↑ **attaca** **I Can Spin!**

I Can Spin!

SUNSHINE

I - can - spin! I - can - spin! I - can - spin! I - can - spin!

SUNSHINE

I - can - spin! I - can - spin! I - can - spin! I - can - spin!

CHORUS

SUN

You can twirl. You can whirl.

CHOR

I - can - spin! I - can - spin! I - can - spin!

PIANO

I Can Spin!

SUN

Jumping is fun - but - spinning is dan - dy. - If

CHOR

I - can - spin! I - can - spin! I - can - spin!

S

I were a sweet, I'd be cot-ton can - dy! - You can twirl!

C

I - can - spin! I - can - spin! I - can - spin!

S

You can whirl.

C

I - can - spin! I - can - spin! I - can - spin!

I Can Spin!

S Keep your head still is an old spinning trick. — If you for-get, you

C I - can - spin! I - can - spin! I - can - spin!

S will get - sick! — You can twirl. You can whirl.

C I - can - spin! I - can - spin! I - can - spin!

S You can hurl. You can! **SUIT!** Cartwheels are fine but

C I - can - spin! I - can - spin!

I Can Spin!

SUIT 2

SUIT 1

spin-ning is great! — If I joined their — cus, I'd be a plate! —

SUNSHINE

SUITS

I would spin!

On a pin!

I would twirl!

He — would — spin!

On — a — pin!

We — would — twirl!

I would whirl!

I would spin!

On a pin!

We — would — whirl!

He — would — spin!

On — a — pin!

I Can Spin!

I would twirl! I would whirl! — Wheres my pen?
We - would - twirl! We - would - whirl! He - would - spin!
BOXLEY SUITS

Wheres my pen? Please hold still. Wheres my pen?
Please hold still. on - a - pin! We - would - twirl! We - would - whirl!

Wheres my pen? please hold still. please hold still!
Wheres my - pen? please - hold - still.

I Can Spin!

SUNSHINE

BOXLEY

C-HORUS

(spoken)

"Thank you, Domo Arigato. I can finally hear myself think!

Musical score for the first system. It features three staves: SUNSHINE (top), BOXLEY (middle), and C-HORUS (bottom). The SUNSHINE and C-HORUS staves contain rests. The BOXLEY staff contains the spoken lyrics. Below these are two staves for piano accompaniment, with a brace on the left. The piano part consists of a treble clef staff with quarter notes and a bass clef staff with quarter notes.

S

B

C

Now where was I?"

(tape measure opens for limbo stick)

Musical score for the second system. It features three staves: S (top), B (middle), and C (bottom). The S and C staves contain rests. The B staff contains the lyrics. Below these are two staves for piano accompaniment, with a brace on the left. The piano part consists of a treble clef staff with quarter notes and a bass clef staff with quarter notes. The word "attaca" is written at the end of the piano part.

attaca

I Can Spin!

SUNSHINE

We - can - bend! We - can - dip! We - can - bend!

CHORUS

We - can - dip! We - can - bend! We can bend! We - can - dip!

We - can - bend! We can dip! We - can - dip!

I Can Spin!

SUNSHINE

Keep your head still - is an old spinning trick. — If you for- get, -

PIANO

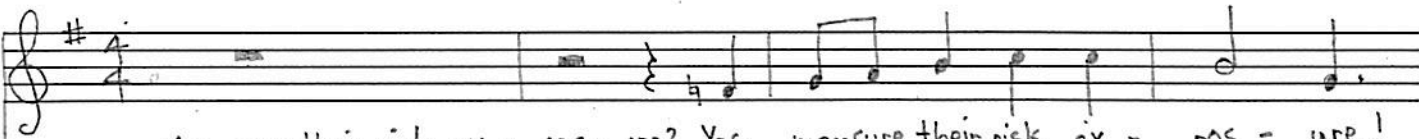
SUNSHINE "Mister?"

you will get - sick. — I don't feel so good (Heave) (Puke)

Risk Assessment

Cue: **FLO** "All that spinning! The producers obviously need to..."

FLO




Mea-sure their risk ex - pos - ure? Yes, mea-sure their risk ex - pos - ure!


CASH



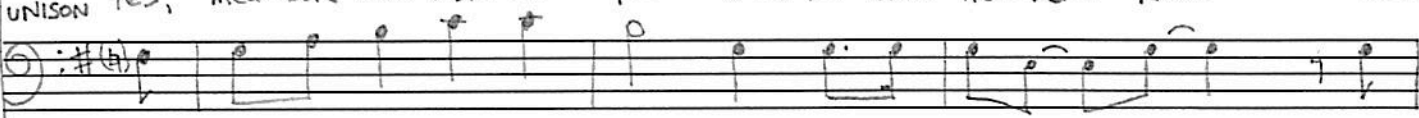
PIANO



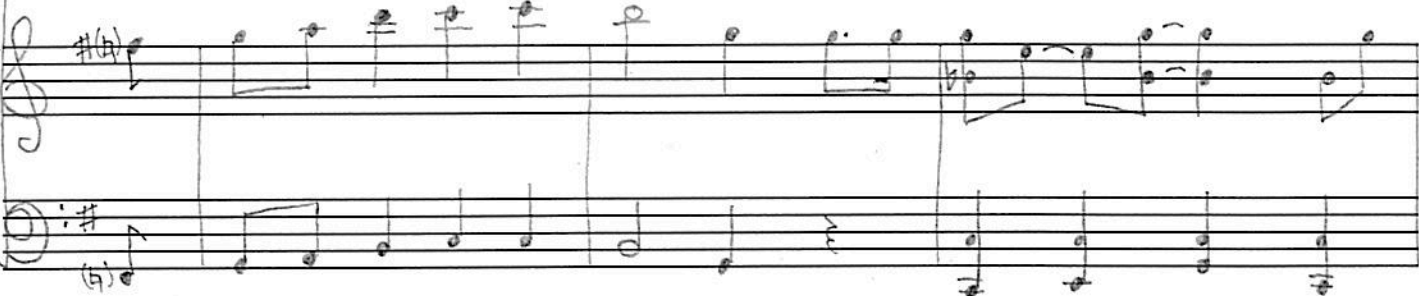
F



C



PNO



♩ = 80 Boogie Feel

UNISON Yes, mea-sure their risk ex - pos - ure! For wed ne-ver - know what

F



risk is there if we didn't mea-sure with ut-most - care!

C



PNO



F
C
PNO

Ne - ver - know there is a - risk...

F
C
PNO

Measure the risk ex - pos - ure. Yes, measure the risk ex - pos - ure.

F
C
PNO

Measure the risk ex - pos - ure. Yes, measure the risk ex - pos - ure.

FLO

SPOKEN

"Remember those times we stayed up all night? Juggling spreadsheets to make them look right."

Musical notation for the first system. It consists of a vocal line and a piano accompaniment. The vocal line is written on a treble clef staff with a key signature of one sharp (F#) and a common time signature. The lyrics are written below the vocal line. The piano accompaniment is written on a bass clef staff with a key signature of one sharp (F#). The melody is simple, using quarter and eighth notes.

CASH

SPOKEN

"How could I forget? I remember it all. Room service snacks, The masseuse was on call."

Musical notation for the second system. It consists of a vocal line and a piano accompaniment. The vocal line is written on a treble clef staff with a key signature of one sharp (F#) and a common time signature. The lyrics are written below the vocal line. The piano accompaniment is written on a bass clef staff with a key signature of one sharp (F#). The melody is simple, using quarter and eighth notes.

Now there's no need for numbers to bore us;

Musical notation for the third system. It consists of a vocal line and a piano accompaniment. The vocal line is written on a treble clef staff with a key signature of one sharp (F#) and a common time signature. The lyrics are written below the vocal line. The piano accompaniment is written on a bass clef staff with a key signature of one sharp (F#). The melody is simple, using quarter and eighth notes.

Our soft-ware so-lu-tions do it all for us!

This system contains the first two staves of music. The top staff is a vocal line in treble clef with a key signature of one sharp (F#) and a 4/4 time signature. The lyrics are "Our soft-ware so-lu-tions do it all for us!". The bottom staff is a piano accompaniment in bass clef with the same key signature and time signature. The piano part consists of a simple harmonic accompaniment.

Mea-sure the risk ex-pos-ure...

This system contains the next two staves of music. The top staff is a vocal line in treble clef with a key signature of one sharp (F#) and a 4/4 time signature. The lyrics are "Mea-sure the risk ex-pos-ure...". The bottom staff is a piano accompaniment in bass clef with the same key signature and time signature. The piano part continues the harmonic accompaniment.

Yes, mea-sure the risk ex-pos-ure! We'll mea-sure the risk ex-pos-ure!

This system contains the final two staves of music. The top staff is a vocal line in treble clef with a key signature of one sharp (F#) and a 4/4 time signature. The lyrics are "Yes, mea-sure the risk ex-pos-ure! We'll mea-sure the risk ex-pos-ure!". The bottom staff is a piano accompaniment in bass clef with the same key signature and time signature. The piano part concludes the piece.

Allegretto

Handwritten musical score for 'Risk Assessment page 5'. The score is written in treble and bass clefs with a key signature of one sharp (F#). It consists of a vocal line and a piano accompaniment. The lyrics are: 'For we'd ne-ver know - what risk is - there if we did - n't mea - sure with ut - most - care. - Ne - ver - know - there is a - risk -'. The piano accompaniment features chords and melodic lines in both hands, with some dynamics like 'b' (piano) and 'f' (forte) indicated. The score is divided into four systems, each with a vocal line and a piano accompaniment.

Un - til we find it - there to - fix! -

Mea - sure the risk ex - pos - ure, Yes,

mea - sure the risk ex - pos - ure! Yeah!

cue: WATCHLEY toots on tuning pipe $\text{♩} = 60$

La, la, la! (finger snaps continue) Tick, tock, find your spot.

(Left Hand on rpt. only)

WATCHLEY That's what makes us tip top Tick, tock, find your spot.

KIDS KIDS tacet to m. 7

Cir-cle time, cir-cle time.

W That's what makes us tip top. Tick, tock, find your spot.

KIDS We all love our cir-cle time. Tell a sto-ry, sing a rhyme

W

That's what makes us tip top. Learning time now draws near.

KIDS

We all love our circle time.

W

Let's put on our listening ears!

KIDS

NATHAN

PIANO

W

You've

heard of bi-o-lo-gy, ge-o-graph-y, zo-o-lo-gy but now here is some-thing new. You

know a-bout chem-is-try, En-glish and his-tor-y but ne-ver was a sci-ence so

1. Watchley 2. Watchley + Kids

Waltz

true as neu - ro - science, neu - ro - sci - ence, the

The first system of the handwritten musical score consists of three staves. The top staff is the vocal line, starting with a treble clef, a key signature of one sharp (F#), and a 6/8 time signature. The lyrics are "true as neu - ro - science, neu - ro - sci - ence, the". The middle staff is the right-hand piano accompaniment, and the bottom staff is the left-hand piano accompaniment. The music is written in a simple, accessible style.

sci - ence that's truly - sub - lime. Neu - ro - science,

The second system of the handwritten musical score consists of three staves. The top staff is the vocal line, with lyrics "sci - ence that's truly - sub - lime. Neu - ro - science,". The middle staff is the right-hand piano accompaniment, and the bottom staff is the left-hand piano accompaniment. The piano accompaniment features chords and moving lines in both hands.

neu - ro - science, it can tell us the ve - ry best time; to

The third system of the handwritten musical score consists of three staves. The top staff is the vocal line, with lyrics "neu - ro - science, it can tell us the ve - ry best time; to". The middle staff is the right-hand piano accompaniment, and the bottom staff is the left-hand piano accompaniment. The piano accompaniment continues with chords and moving lines.

take a test or have a rest, if it's se - ven or nine.

The fourth system of the handwritten musical score consists of three staves. The top staff is the vocal line, with lyrics "take a test or have a rest, if it's se - ven or nine." and a first ending bracket. The middle staff is the right-hand piano accompaniment, and the bottom staff is the left-hand piano accompaniment. The piano accompaniment concludes the piece with a final chord.

2.

$\text{♩} = 120$

nine.

ATCHLEY

And what do you think is the ver-ry best time

for a special test, a special test... that can

prove that your teacher teaches better than the rest. (tacet)

loco

WATCHLEY + KIDS

What do you think is the ver-y best time for a spe-cial test, a

W+K

spe-cial test that can prove that your teacher teaches bet-ter than the rest?

1. Watchley 2. Watchley + Kids

Look no fur - ther than x mi - nus y;

The first system of the handwritten musical score consists of a vocal line on a single staff and a piano accompaniment on two staves. The vocal line begins with a double bar line and a repeat sign, followed by the lyrics "Look no fur - ther than x mi - nus y;". The piano accompaniment includes a treble clef with a 7-fingered chord and a bass clef with a 7-fingered chord. The music is written in a simple, accessible style.

its all there to be seen. Don't ask why. Look no fur - ther than

The second system continues the musical score. The vocal line has the lyrics "its all there to be seen. Don't ask why. Look no fur - ther than". The piano accompaniment continues with similar chordal structures. The system ends with a double bar line and repeat signs.

x mi - nus y; its all there - to be seen. Don't ask why.

The third system features the lyrics "x mi - nus y; its all there - to be seen. Don't ask why." in the vocal line. The piano accompaniment provides harmonic support. The system concludes with a double bar line and repeat signs.

NATCHLEY

KIDS (split)

Val - ue Add - ed Ass - ess - ment is best at nine - se - ven -
 Look no fur - ther than x mi - nus y; its all there - to be

The fourth system contains the lyrics "Val - ue Add - ed Ass - ess - ment is best at nine - se - ven -" and "Look no fur - ther than x mi - nus y; its all there - to be". The piano accompaniment continues with block chords. The system ends with a double bar line and repeat signs.

teen. — Val - ue Add - ed Ass - ess - ment is

seen. Don't ask why. Look no fur - ther than x mi - nus y ;

best at nine - se - ven teen. —

it's all there to be seen. Don't ask why.

Unis.
molto rit.
It's — all there to be seen.

Value for Money pg 1

Pay - no mind, my friend. - // Yes, pay - no mind, my friend.

CASH

Handwritten musical notation for the first system. It features a vocal line in bass clef with a 4/4 time signature and a piano accompaniment in grand staff (treble and bass clefs). The melody consists of quarter and eighth notes. A double bar line is present in the middle of the system.

Yes, pay - no mind, my friend - 'cause we've got bigger things

Handwritten musical notation for the second system. The vocal line continues with lyrics and includes a tempo marking 'd=80'. The piano accompaniment continues with chords and melodic lines. A double bar line is present in the middle of the system.

FLO

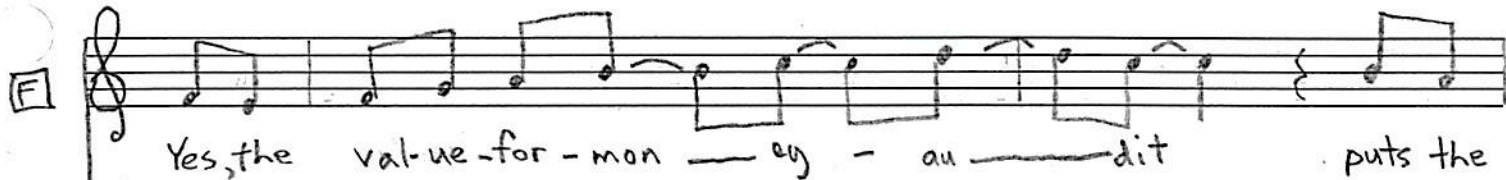
on the docket. We've got bigger plugs in the socket.

CASH

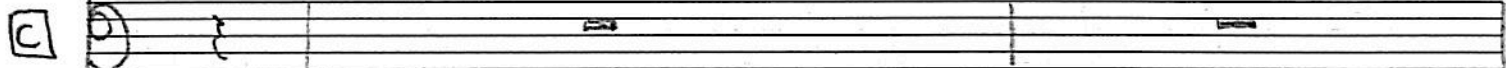
Handwritten musical notation for the third system. The vocal line continues with lyrics. The piano accompaniment features a more complex harmonic structure with some accidentals (sharps) and rests. A double bar line is present in the middle of the system.

Value for Money pg 2

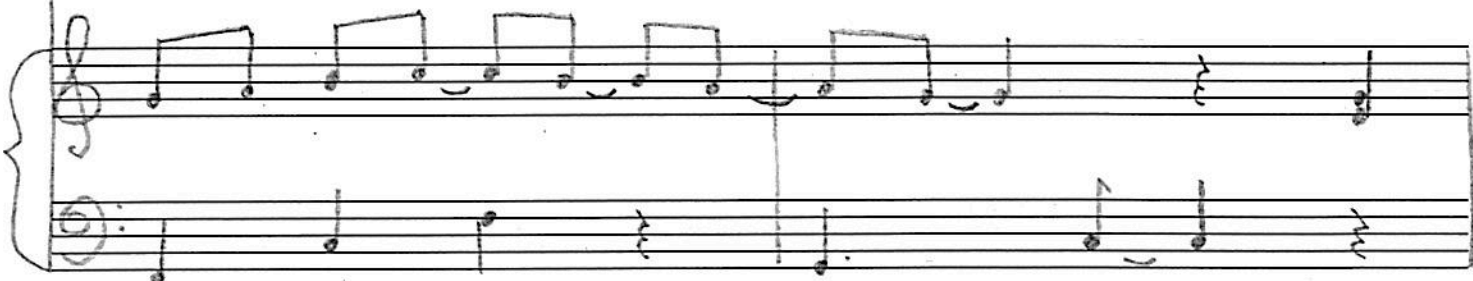
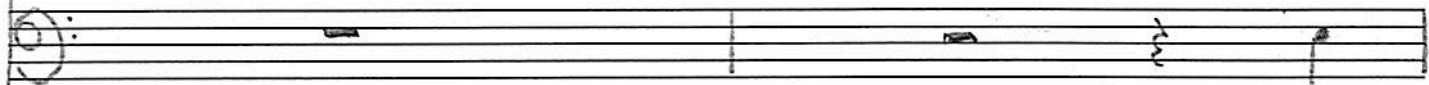
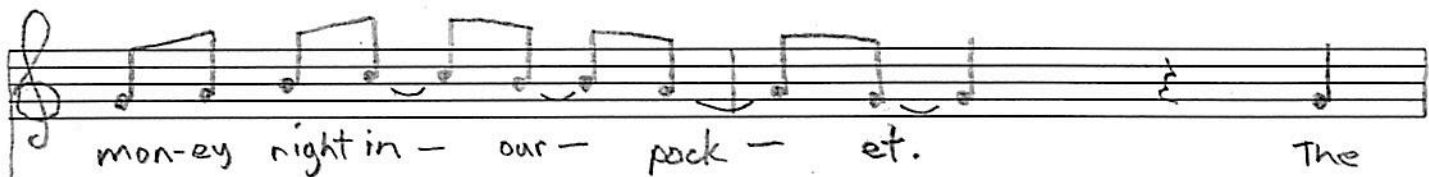
F Yes, the val-ue-for-mon-ey - au - dit puts the



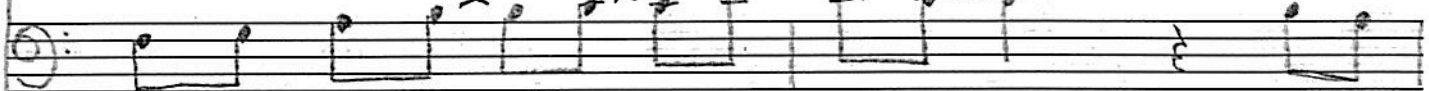
C



mon-ey right in - our - pack - et. The



val-ue-for-mo-ney au - dit puts the



Value for Money pg 3

mo - ney right in - our - pock - et.

Yes, the val - ue - for - mo - ney - an - dit.

How shall we ass - ess this mu - sic - al? What are the val - ue fac - tors?

The ques-tion is who's pay-ing us, the aud-ience or the act-ors?

Our - cli-ent list is - ex - clu - sive: we take on ly the best.

We work - for the - pro - du - cers: the hell with all the rest.

2ve loco

31312

Value for Money pg 5

The val-ue for mon - ey - or - bit. The
The val-ue for mon - ey - or -

8ve loco

val-ue for mon - ey - or - bit. The
bit. The val-ue for - mon - ey - The or -

val-ue for mon - ey - or - bit. The
bit. The val-ue for mon - ey - or -

Value for Money pg 6

IALOGUE

val-ue for mon-ey or bit.
bit: The val-ue for mon

IALOGUE

3 3 3 3

Yes, the val-ue for mon-ey an dit puts the

mo-ney right in our pock et. The

Value for Money pg 7

val - ue for mon - ey - au dit - puts the

mon - ey in the bank!

Sakura Sound Off pg 1

$\text{♩} = 50$

The first system of handwritten musical notation consists of two staves. The upper staff is in treble clef and contains a sequence of chords: a G4-A4 dyad, a G4-A4-B4 triad, a G4-A4-B4-C5 tetrad, a G4-A4-B4-C5 tetrad, a G4-A4-B4-C5 tetrad, and a G4-A4-B4-C5 tetrad. The lower staff is in bass clef and contains a sequence of notes: G3, A3, B3, C4, B3, A3, G3, followed by a whole rest.

The second system of handwritten musical notation consists of two staves. The upper staff contains chords: G4-A4, G4-A4-B4, G4-A4-B4-C5, G4-A4-B4-C5, G4-A4-B4-C5, G4-A4-B4-C5, and G4-A4-B4-C5. The lower staff contains notes: G3, A3, B3, C4, B3, A3, G3, followed by a whole rest.

The third system of handwritten musical notation consists of two staves. The upper staff contains chords: G4-A4, G4-A4-B4, G4-A4-B4-C5, G4-A4-B4-C5, G4-A4-B4-C5, G4-A4-B4-C5, and G4-A4-B4-C5. The lower staff contains notes: G3, A3, B3, C4, B3, A3, G3, followed by a whole rest.

The fourth system of handwritten musical notation consists of two staves. The upper staff contains chords: G4-A4, G4-A4-B4, G4-A4-B4-C5, G4-A4-B4-C5, G4-A4-B4-C5, G4-A4-B4-C5, and G4-A4-B4-C5. The lower staff contains notes: G3, A3, B3, C4, B3, A3, G3, followed by a whole rest.

The fifth system of handwritten musical notation consists of two staves. The upper staff contains chords: G4-A4, G4-A4-B4, G4-A4-B4-C5, G4-A4-B4-C5, G4-A4-B4-C5, G4-A4-B4-C5, and G4-A4-B4-C5. The lower staff contains notes: G3, A3, B3, C4, B3, A3, G3, followed by a whole rest.

The sixth system of handwritten musical notation consists of two staves. The upper staff contains chords: G4-A4, G4-A4-B4, G4-A4-B4-C5, G4-A4-B4-C5, G4-A4-B4-C5, G4-A4-B4-C5, G4-A4-B4-C5, G4-A4-B4-C5, G4-A4-B4-C5, G4-A4-B4-C5, G4-A4-B4-C5, and G4-A4-B4-C5. The lower staff contains notes: G3, A3, B3, C4, B3, A3, G3, followed by a whole rest.

Call of the Kaizan

mf , " "
 f , " "
 f , march forward

$\text{♩} = 60$

STAFF Call & Response

A

Ho-shin Kan-ri! Just in time! Kan-ban! Mu-da! Kai-zen time!

Move the chil-dren down the line! Ho-shin Kan-ri! Just in time!

B

Sound off! Chil-dren are the un-its! Sound off! Move them down the line!

Sound off! Con-tin-u-ous im-prove-ment! Sound off! Just in time!

Sound off! Chil-dren are the u-nits! Sound off! Move them down the line!

Sound off! Val-ue-ad-ded widgets! Sound off! Just in time!

C

Ho-shin Kan ri! Just in time! Kan-ban! Mu-da! Kai-zen time!

Move the chil-dren down the line! Ho-shin Kan ri! Just in time!

Repeat **B**

Call of the Kaizan (SAD REPRISÉ)

slowly $\text{♩} = 40$

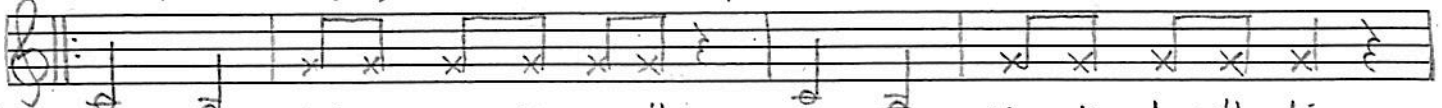
STAFF Unison



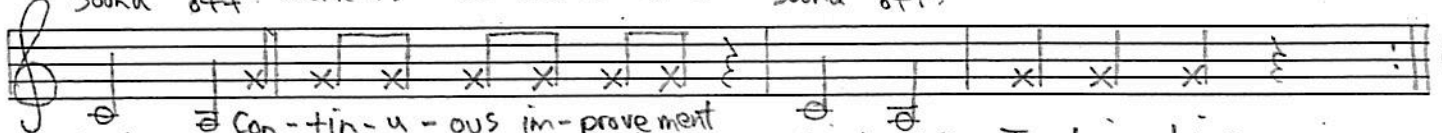
Ho-shin Kan-ri Just in time. Kan-ban Mu-da Kai-zen time.



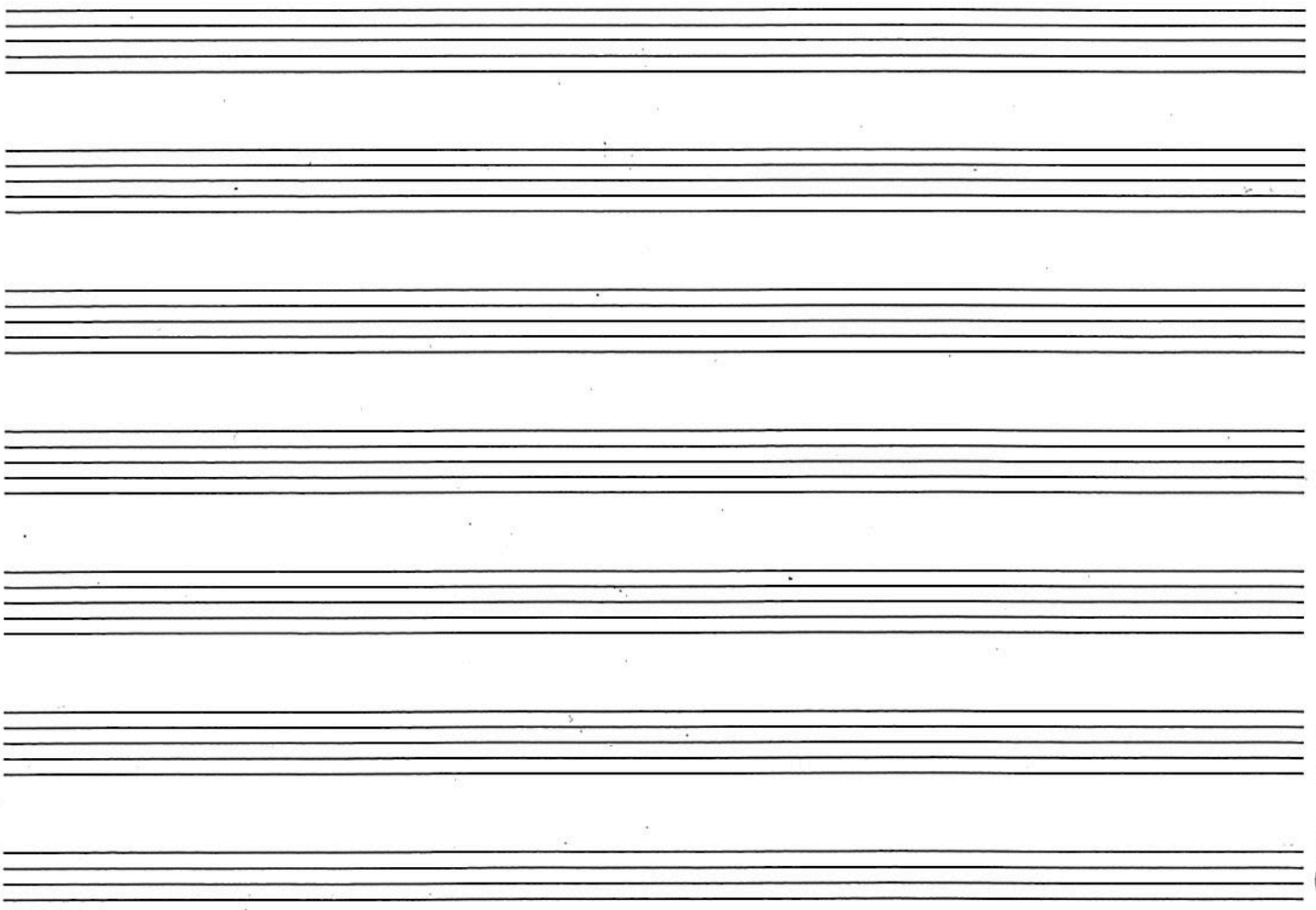
Move the workers down the line. Ho-shin Kan-ri Just in time.



Sound off. Workers are the u-nits. Sound off. Move them down the line.



31312 Sound off. Con-tin-u-ous im-prove-ment
Val-ue added wid gets. Sound off. Just in time.



12 Stave © Mayfair

12 Stave © Mayfair

Sukiyaki Sound Off pg 1

p34

Pensively

Sukiyaki Sound Off pg 2

The first system of handwritten musical notation consists of two staves. The upper staff is in treble clef and contains a melody of eighth and quarter notes, with a fermata over the final note. The lower staff is in bass clef and contains a bass line of quarter notes. A vertical bar line is placed after the second measure of each staff.

The second system of handwritten musical notation also consists of two staves. The upper staff is in treble clef and contains a melody of quarter notes, ending with a whole note. The lower staff is in bass clef and contains a bass line of quarter notes. A vertical bar line is placed after the second measure of each staff.

Ten sets of empty musical staves, each consisting of a treble and bass staff joined by a brace on the left side, provided for student practice.

100 Minutes Lost pg 1

p36.

Slow $\downarrow = 60$

FLUTE

Handwritten musical notation for the Flute part, first system. The staff is in 4/4 time and contains a melody of quarter notes: G4, A4, B4, C5, B4, A4, G4.

CASHT

Handwritten musical notation for the Cassidy part, first system. The staff is in 4/4 time and contains a melody of quarter notes: G3, A3, B3, C4, B3, A3, G3.

PIANO

Handwritten musical notation for the Piano part, first system. The staff is in 4/4 time and contains a melody of quarter notes: G3, A3, B3, C4, B3, A3, G3.

Handwritten musical notation for the Flute and Cassidy parts, second system. The Flute part (top staff) contains a melody of quarter notes: G4, A4, B4, C5, B4, A4, G4. The Cassidy part (bottom staff) contains a melody of quarter notes: G3, A3, B3, C4, B3, A3, G3.

days - was - ted cha - sing balls and gath'ring up the bats,

Handwritten musical notation for the Piano part, second system. The staff is in 4/4 time and contains a melody of quarter notes: G3, A3, B3, C4, B3, A3, G3.

Handwritten musical notation for the Flute and Cassidy parts, third system. The Flute part (top staff) contains a triplet of quarter notes: G4, A4, B4, followed by quarter notes C5, B4, A4, G4. The Cassidy part (bottom staff) is empty.

Time out to ban - dage knees, so much was - ted move ment.

Handwritten musical notation for the Flute and Piano parts, fourth system. The Flute part (top staff) contains a triplet of quarter notes: G4, A4, B4, followed by quarter notes C5, B4, A4, G4. The Piano part (bottom staff) contains a melody of quarter notes: G3, A3, B3, C4, B3, A3, G3.

Sec-onds squandered wi-ping, no-ses, all lost to your im-provement. - You've

ta-ken all the trai-ning, you can't de-ny the cost.

Ev-ery sin-gle week... one hun-dred min-utes →

(♩ = 100)

attaca

attaca

100 Minutes Lost pg 3

p 38

Handwritten musical notation for the piano introduction. It consists of two systems of staves. The first system has a treble and bass clef staff with a few notes and rests. The second system is a grand staff with a treble and bass clef staff, featuring a series of chords in the right hand and a simple bass line in the left hand. The music is in 4/4 time and includes repeat signs.

FLO

CASH

Handwritten musical notation for the vocal line. The lyrics are "Ev - ery - min - ute - counts,". The melody is written in a treble clef with a bass line in the bass clef. The notes are mostly quarter and eighth notes with slurs. The lyrics are written below the notes.

Handwritten musical notation for the piano accompaniment corresponding to the first vocal line. It features a grand staff with a treble and bass clef staff. The right hand plays chords, and the left hand plays a simple bass line. The music is in 4/4 time.

Handwritten musical notation for the vocal line. The lyrics are "ev - ery sin - gle i - o - ta. We". The melody is written in a treble clef with a bass line in the bass clef. The notes are mostly quarter and eighth notes with slurs. The lyrics are written below the notes. There are triplets indicated above and below the notes.

Handwritten musical notation for the piano accompaniment corresponding to the second vocal line. It features a grand staff with a treble and bass clef staff. The right hand plays chords, and the left hand plays a simple bass line. The music is in 4/4 time.

here-by re-lieve you - of - your - sat - tel

3

3

which is the pro - per - ty of Ki - yo - ta!

3 3

Ev - ery - min - ute counts,

Got to make ev - ery last quo - ta - !

Here - by - we - de - mote ya and snatch - back - your satchel

which is the pro - per - ty of Ki - yo - ta!

attaca

to Pirate
Battle

Pirate Battle pg 1

p41

The first system of handwritten musical notation consists of two staves. The upper staff is in treble clef and contains a melody of eighth notes, with some notes beamed together. The lower staff is in bass clef and contains a bass line of eighth notes, also with some beaming. The system is divided into four measures by vertical bar lines.

The second system of handwritten musical notation consists of two staves. The upper staff continues the melody from the first system, featuring eighth notes and some beaming. The lower staff continues the bass line with eighth notes. The system is divided into four measures.

The third system of handwritten musical notation consists of two staves. The upper staff continues the melody with eighth notes and some beaming. The lower staff continues the bass line with eighth notes. The system is divided into four measures.

The fourth system of handwritten musical notation consists of two staves. The upper staff continues the melody with eighth notes and some beaming. The lower staff continues the bass line with eighth notes. The system is divided into four measures.

The fifth system of handwritten musical notation consists of two staves. The upper staff begins with a fermata over the first measure, followed by a series of chords and eighth notes. The lower staff continues the bass line with eighth notes. The system is divided into four measures.

Four empty musical staves are located at the bottom of the page, arranged in two pairs. They are not filled with any notation.

We Can Spin! (Finale) pg. 1

p42

$d=60$ ($\text{♩} = \text{♩.}\text{♩}$)

ALL

We - can - spin!

We - can - spin!

We - can - spin!

PIANO

We - can - spin!

Jumping is fun - but

spinning is dan - dy. If we were a sweet, we'd be cot-ton can - dy. -

We can twirl!

We can whirl!

We

Cartwheels are fine but spin-ning

is great. If we joined the cir - cles, wed be a plate!

WE WOULD SPIN! We - would - spin! ON A PIN on - a - pin! WE WOULD TWIRL.

We - would - twirl WE WOULD WHIRL! We - would - whirl You

We Can Spin! (Finale) pg.3

cant mea-sure life, it moves much too quick - ly; by the

time you catch up, its gone, gone, gone,

gone gone So LET'S BE FREE! Lets - be - free! YOU AND ME!

You - and - me! HAP-PI-LY! Hap - pi - ly! CANT YOU SEE!

We Can Spin! (Finale) pg. 4

Cant - you - see that time - is - yours! EV - ER - MORE

Ev - er - more! TAKE YR TIME! Take - your - time! TAKE IT BACK!

Take - - - back your time.

FIN

Attaca Pirate Battle for Bows RRRRH!

Patrick Johnson 16/02/17